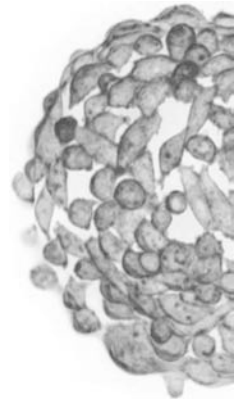


Global Cell Solutions Culture. Simplified.



Protocol: Hoechst Staining Cells on GEM

Questions? Suggestions? We want to help! Please contact us at:
+1-434-975-4271, ext 103
support@globalcellsolutions.com

Here is a method for easily visualizing cells on the GEM.

Materials:

- Cells on GEM
- Hoechst Stain 33342
- PBS
- Fluorescent Microscope

1. Put 50 μ L of the cell culture sample (cells on GEM) in one of the wells in the 96-well plate.
2. Add Hoechst 33342 solution to the sample in the well to a final concentration of 0.2 to 5 μ g/mL and incubate for 20-30 minutes.
3. Incubate the well at room temperature for 15-20 minutes.
4. Capture images of the sample under UV light and DAPI filter using the microscope.

Additional Tips:

- Hoechst stain is inexpensive and at GCS we often use at least 10X more to give us a faster stain (i.e. under 5 minutes).